

SPEC SHEET + MEASUREMENTS



Nike Bomber Jacket. NKFQ4759

Product photo



Keep your look clean and classic with this bomber that works just about anywhere.

- 5-ounce, 62/38 cotton/nylon
- Rib knit collar and cuffs
- Dyed-to-match zipper
- Snap-front pockets
- Contrast embroidered Swoosh logo on the left sleeve and woven label at the back

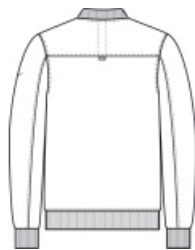
CARE INSTRUCTIONS

Wash With Like Colors. Do Not Use Softeners. Remove Immediately. Do Not Allow To Lay On Itself When Wet. Fasten All Closures To Wash And Dry.

Sketches



front



back

SPEC SHEET + MEASUREMENTS



Nike Bomber Jacket. NKFQ4759

PRODUCT MEASUREMENTS

	XS	S	M	L	XL	2XL	3XL	4XL
Body Length at Back	26 3/8	26 3/4	27 1/8	27 7/8	28 3/4	29 1/2	30 1/4	31 1/8
Chest	20	21 5/8	23 1/4	24 3/4	26 1/2	28 3/4	30 7/8	32 5/8
Set in Sleeve Length	26 1/2	26 3/4	27	27 1/4	27 3/8	27 5/8	28	28 1/4

Body Length at Back: Measured from high point shoulder to finished hem at back.

Chest: Measured across the chest one inch below armhole when laid flat.

Set in Sleeve Length: Measure from Center Back neck to shoulder point to sleeve hem.

SIZE CHARTS

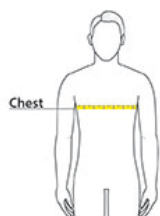
	XS	S	M	L	XL	2XL	3XL	4XL
Chest	32-35	35-37 1/2	37 1/2-41	41-44	44-48 1/2	48 1/2 -53 1/2	53 1/2 - 58	58-63

SPEC SHEET + MEASUREMENTS



Nike Bomber Jacket. NKFQ4759

HOW TO MEASURE



CHEST

Measure under the arm and around the fullest part of the chest with arms down, keeping tape horizontal.

COLORS



Black
PMS BLACK
C



Cool Grey
PMS 424C



Midnight Navy
PMS 2767C